

Erasmus+ Mobilities in Italy

AMFI INTERNATIONAL

THE MOBILITY EXPERT



"Our social responsibility is to provide participants with the opportunity of qualified professional training and a fantastic stay abroad at the same time [...]"





ABOUT US

Our history & purpose

Active in the field of International Mobility, Vocational and Linguistic Training since **2008**, AMFI International is a non-profit organization located in the heart of Celano, Italy composed of a young, dynamic team.

OUR **KEYWORDS** ARE:

- **Cooperation**: Together we achieve more.
- **Social responsibility**: Not only for our actions but also for our environment and people.
- **Passion**: Committed in heart and mind.
- **Diversity**: As multifaced as our offer, so are our intercultural relationships, because: We love to meet people from all around the world!
- **Creativity**: We are creative, inspiratory and addicted to create fun and sparkle new ideas.
- **Team-Spirit**: Living a positive team-spirit reflects in our open corporate culture.
- **Growth & learning**: We aim to develop ourselves and our offer continuously, we are always willing to learn.
- **Quality & Excellence**: What we do, we do well.
- **Solidarity & confidence**: Living solidarity through voluntary service gives us confidence in a more empathic world.
- **Integrity**: Bееing real in every aspect.



CELANO & AVEZZANO

Our Erasmus+ Locations

Small but cozy and welcoming cities in the heart of Abruzzo. Celano & Avezzano are the places that all our participants love. They feel like home.

Both cities are settled in the **beautiful Velino-Sirente Regional Park**, close to the National Park of Abruzzo, Lazio and Molise. 1 hour away from Rome and 1 hour away from the city of Pescara, on the seaside of the region, the two cities are a strategic location to move around and to visit Naples, Florence, Venice, Milan and the rest of Italy and Europe.

Being smaller towns, the cost of life is **cheap** and students receive a **family-like treatment**, both from AMFI and from the companies, which allows them to feel more included and to get the best out of their experience.

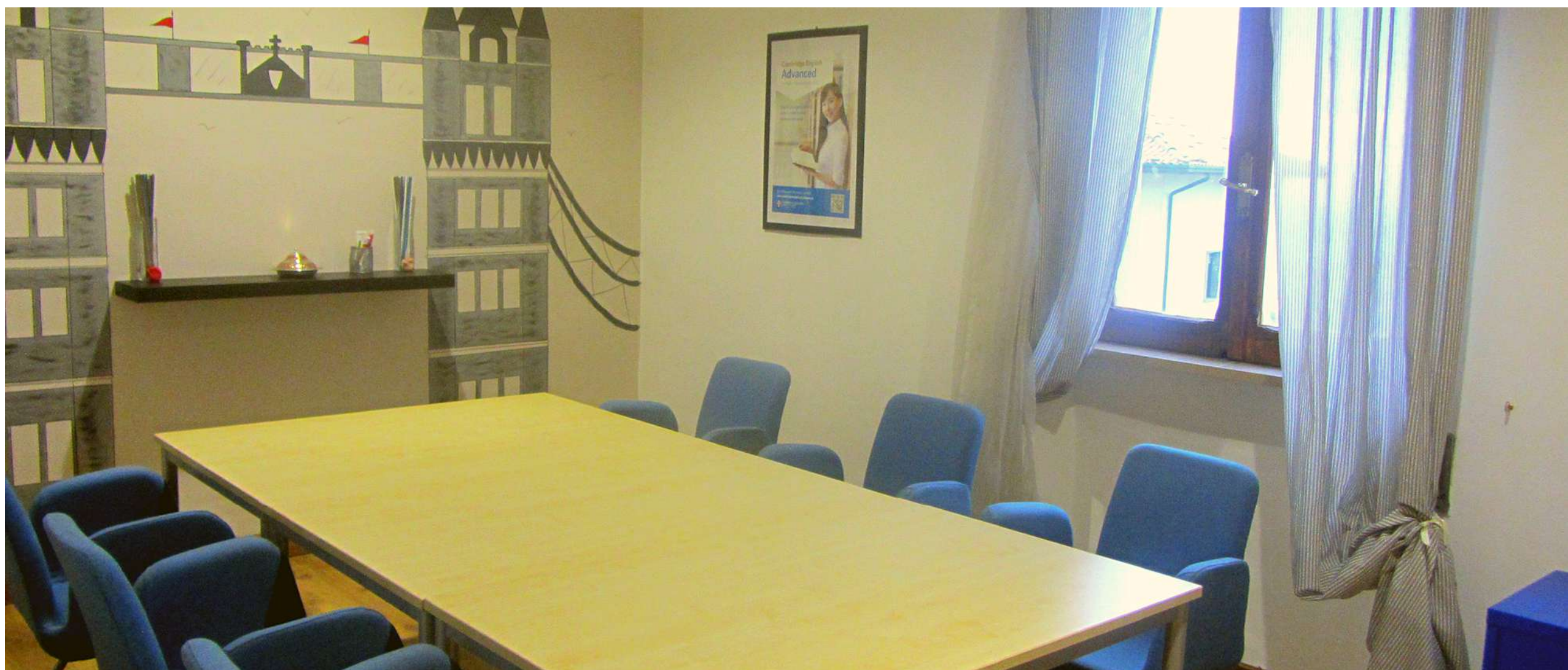
AMFI INTERNATIONAL | THE MOBILITY EXPERT IN ITALY





OUR HEADQUARTERS

The Erasmus+ Spot



Some Inspiring Words

**GRAZIE MILLE! <3 THANK YOU FOR
FINDING ME THE BEST WORKING
PLACE, I COULDN'T DREAM FOR
MORE. HOPE TO SEE YOU ALL AGAIN
SOME DAY!**

Laura Torkki, Finland - Intern



WHAT WE CAN DO

Our real purpose

AMFI collaborates with many **local** and **international partners**; thus, our staff is able to provide high quality hosting services for learners and staff organizing:

- **INTERNSHIP** PLACEMENTS FOR VET AND UNIVERSITY STUDENTS;
- **JOB SHADOWING** PROGRAMMES FOR TEACHERS AND STAFF;
- **KAI TRAINING COURSES** FOR TEACHERS AND STAFF;

in the following **fields**:

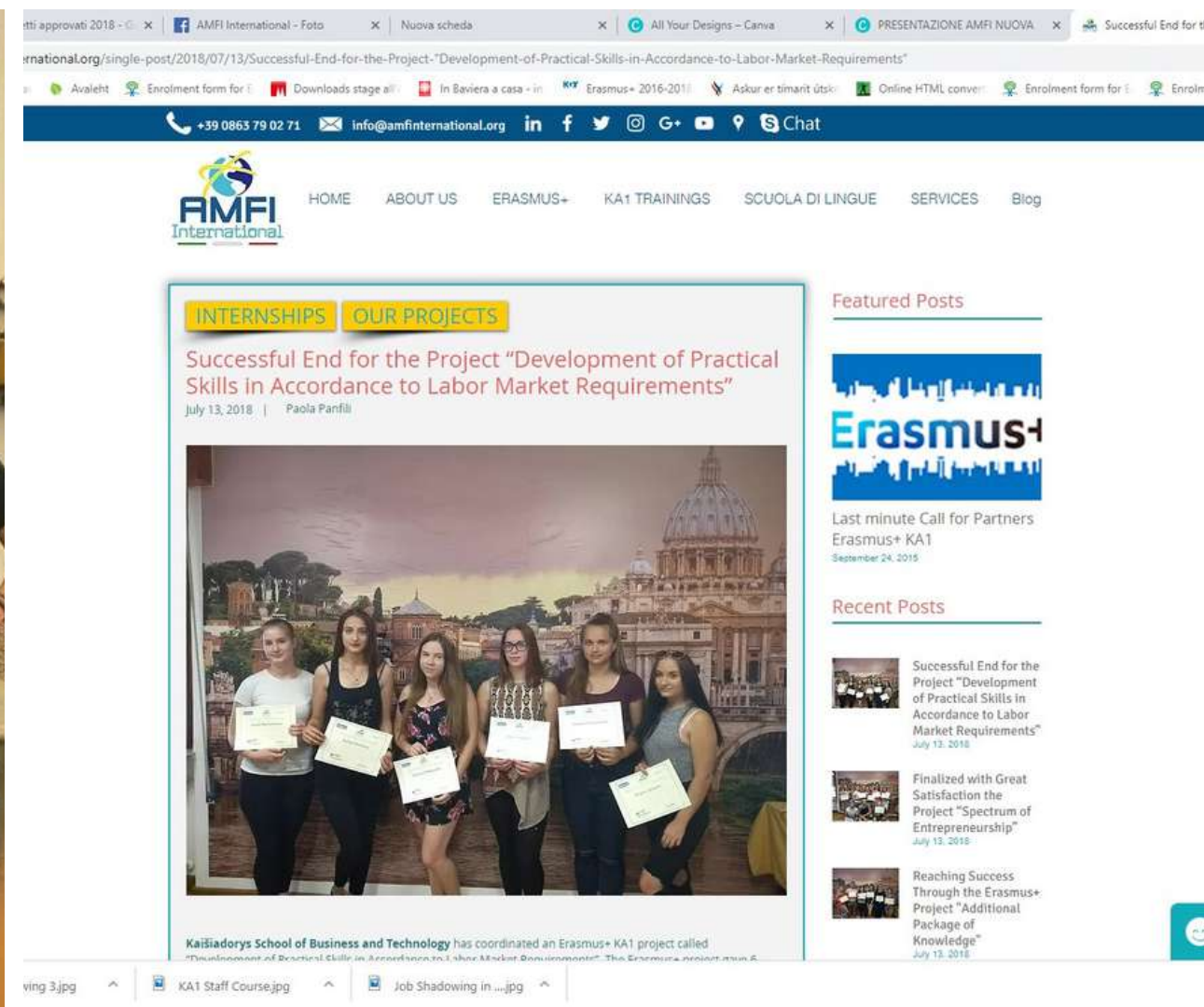
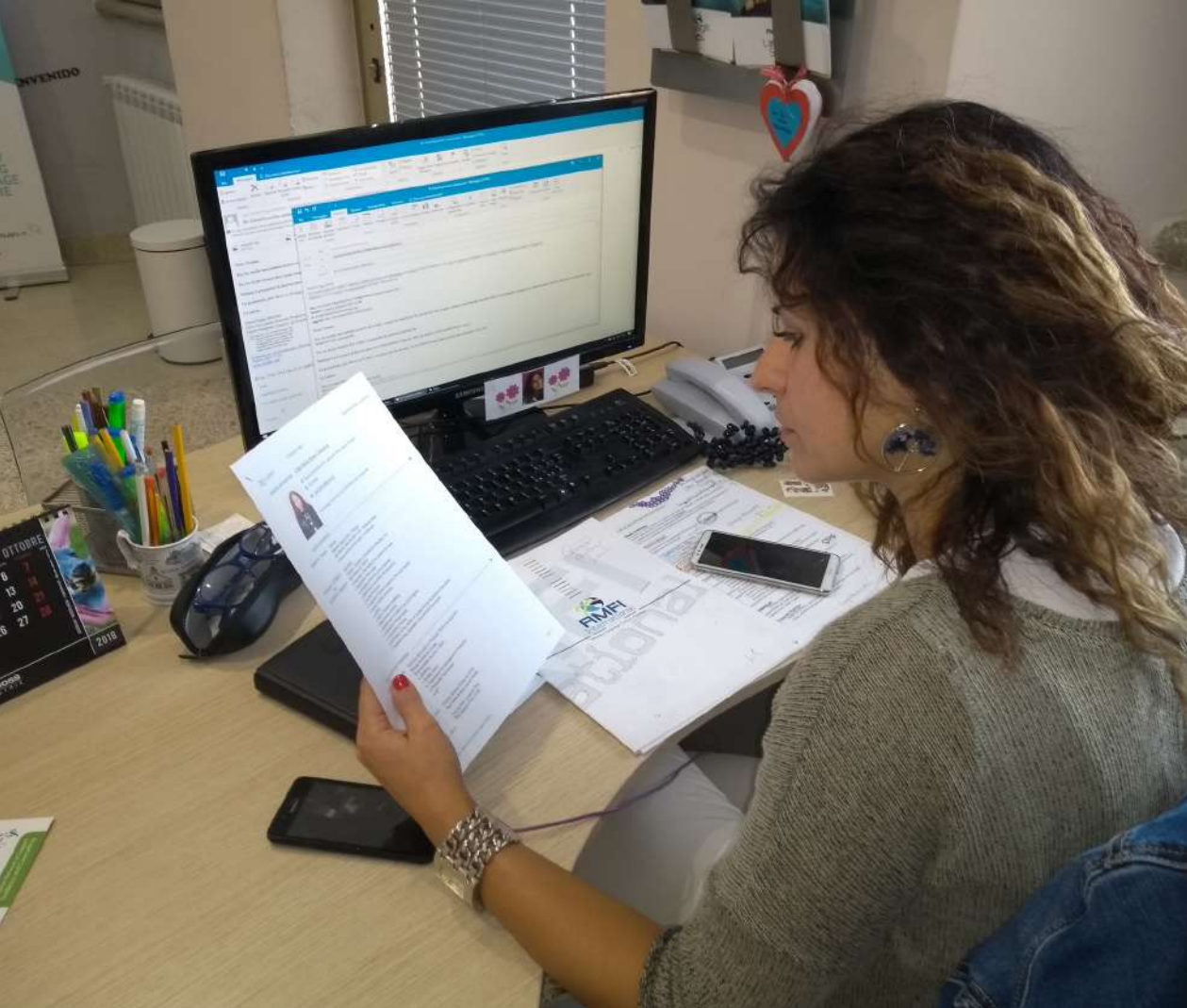
- Agricultural and Biological Production
- Human Resources
- Animal Care
- IT/Computer Science/Web Design
- Architecture & Urban Planning
- Interior Design
- Arts & Humanities
- Law
- Business & Marketing
- Mechanical/Mechatronics/Electrical
- Communication & Journalism
- NGO/Charity
- Education
- Performing Arts and Music
- Engeneering
- Photography
- Event Planning
- Psychology & Social Work
- Gastronomy & Bartending
- Theater
- Health
- Video Production
- Hospitality & Tourism
- Sports Management & Training
- Telecommunications

HOW WE CAN DO IT

Our 6-steps procedure

To reach GREAT QUALITY results, we organize our work in 5 MAIN STEPS:

1. **PRE-ARRIVAL**: evaluation of CVs and profiles' matching;
2. **ON ARRIVAL**: Welcome meeting with cultural info included;
3. **POST ARRIVAL**: Cognitive Meeting in the hosting companies;
4. **DURING**: Monitoring and collection of dissemination material (pictures, videos);
5. **PRE-DEPARTURE**: Final meeting with Evaluation, Europass completion and Certificates;
6. **POST DEPARTURE**: Report completion, newspaper articles, blog entries et al.



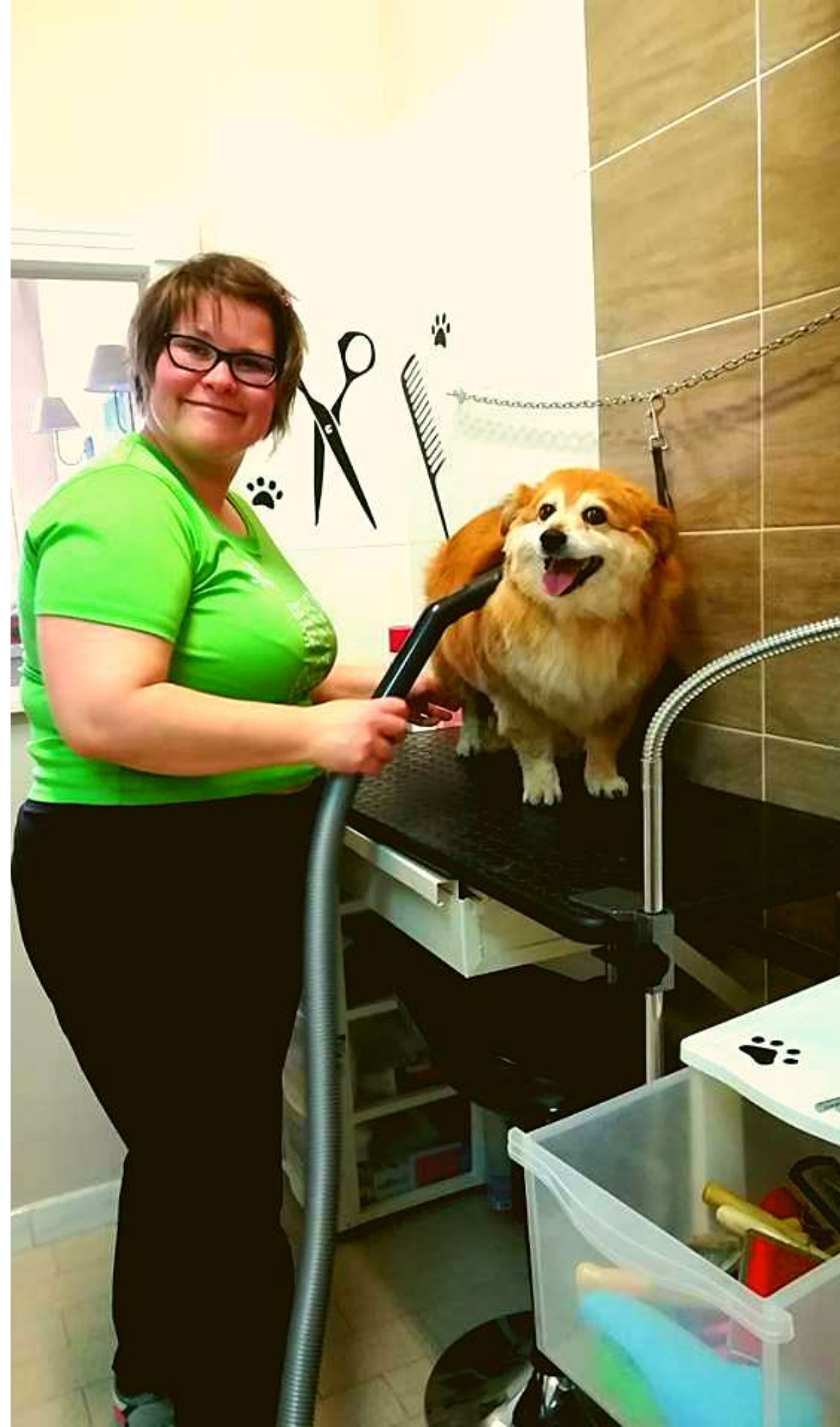


INTERNSHIP PLACEMENTS

Our management

When managing an ERASMUS+ MOBILITY PROJECT envisioning students' placements, our staff follows a specific procedure, which includes:

- Analysis of the project objectives;
- Analysis of each candidate CV;
- Finding and managing the internship;
- Organization of transportation;
- Management of accommodation solutions;
- Welcome meeting at AMFI headquarters;
- Work orientation session at the presence of an AMFI tutor;
- Tutoring & Project assessment during and after project;
- Italian Language Course with experienced L2 teachers (if requested);
- Social, cultural and integration planning;
- Cultural activities, if requested;
- Monitoring and evaluation;
- Final certifications and reports





ITALIAN LANGUAGE COURSES

in partnership with CPIA National Center for Languages

We have established a partnership with **CPIA - Avezzano section (Center for Adult Education)**, which organizes certified Italian courses with **experienced L2 teachers**. The latter are accredited to teach Italian as a second language.

Some long-term students have been able to follow all the courses and to access to the national exam to receive an **official certification** from the Italian state system, which certified their level of Italian.

AMFI also can release an internal certificate attesting the number of hours and the level reached, according to the communications received by CPIA.

Students are welcomed in a family-like environment, so that they feel comfortable to learn a different language with all the necessary lightheartedness they need.

Some Inspiring Words

GRAZIE MILLE AMFI! I WOULD LIKE TO THANK YOU FOR THE LAST 3 WEEKS. STUDENTS GAINED LIFE-LONG FRIENDSHIPS AT THEIR PRACTICAL PLACES. STUDENTS HAD A LOT OF USEFUL KNOWLEDGE DURING THE PROGRAM. ORGANIZING WAS VERY GOOD. CELANO IS A BEAUTIFUL CITY. WE MET KIND AND FRIENDLY PEOPLE IN THE HOTEL AND IN THE CITY. THE TRIP TO THE CANYON WAS WONDERFUL. I HOPE WE CAN STILL WORK TOGETHER. 🙏🙏🙏😊🙏

Viktória Szatmári, Hungary - Accompanying Teacher



JOB SHADOWING

Our management

In planning a job shadowing we follow a specific procedure.

BEFORE THE MOBILITY

- look at the objectives of the project;
- study the profiles of the participants involved;
- find the best institution/s that can host the mobility;
- organize the programme

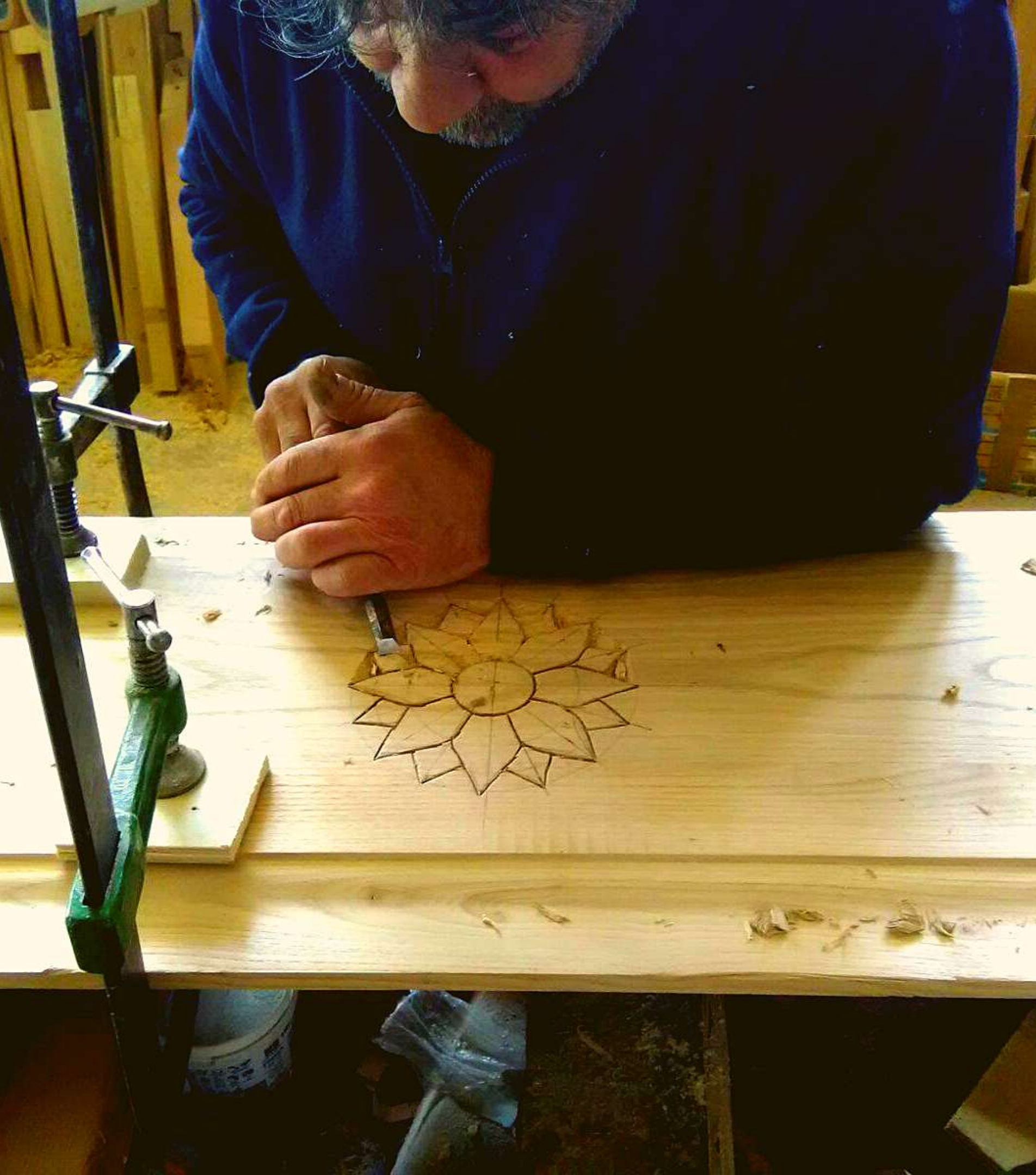
DURING THE MOBILITY

- Take care of the airport transfer upon request;
- Offer tutoring;
- Organize the welcome meeting in our headquarters;

- Participate to the cognitive session with the hosting institution/s;
- Plan and manage cultural activities if requested;
- Proceed to the monitoring and evaluation of the project;
- Fill out all the documents according to the Erasmus+ procedures;
- Organize the final certification and Europass hand out.

AFTER THE MOBILITY

Upon request, we can publish articles on our blog or newspaper entries to be added to your final report. We can also give pictures and other material to be used as additional dissemination products.



Some Inspiring Words

ME ALEGRA QUE PARA VOSTROS HAYA SIDO UNA BUENA EXPERIENCIA YA QUE NOSOTROS COMO CENTRO EDUCATIVO HEMOS TENIDO UNA VALORACION MUY POSITIVA EN LAS ENCUESTAS DE LOS ALUMNOS UNA VEZ CONCLUIDO EL PROYECTO. ESTAMOS MUY SATISFECHOS DE VUESTRA GESTION COMO CENTRO DE ACOGIDA AL DARNOS UN TRATO CERCANO Y FAMILIAR.

Claudia Romero, Spain - Erasmus+ Coordinator IES Pintor Pedro Gomez



KAI TRAINING COURSES

Our management

We have a varied list of KAI TRAINING COURSES, which you can see directly on our website. In order to activate a course, we require a minimum of 6 participants.

We can also organize **ad-hoc courses** if the participating group is composed of 10+ people.

All of our courses last 4 hours per day and can contain up to **3 field visits** in schools or institutions relevant for the course topic.

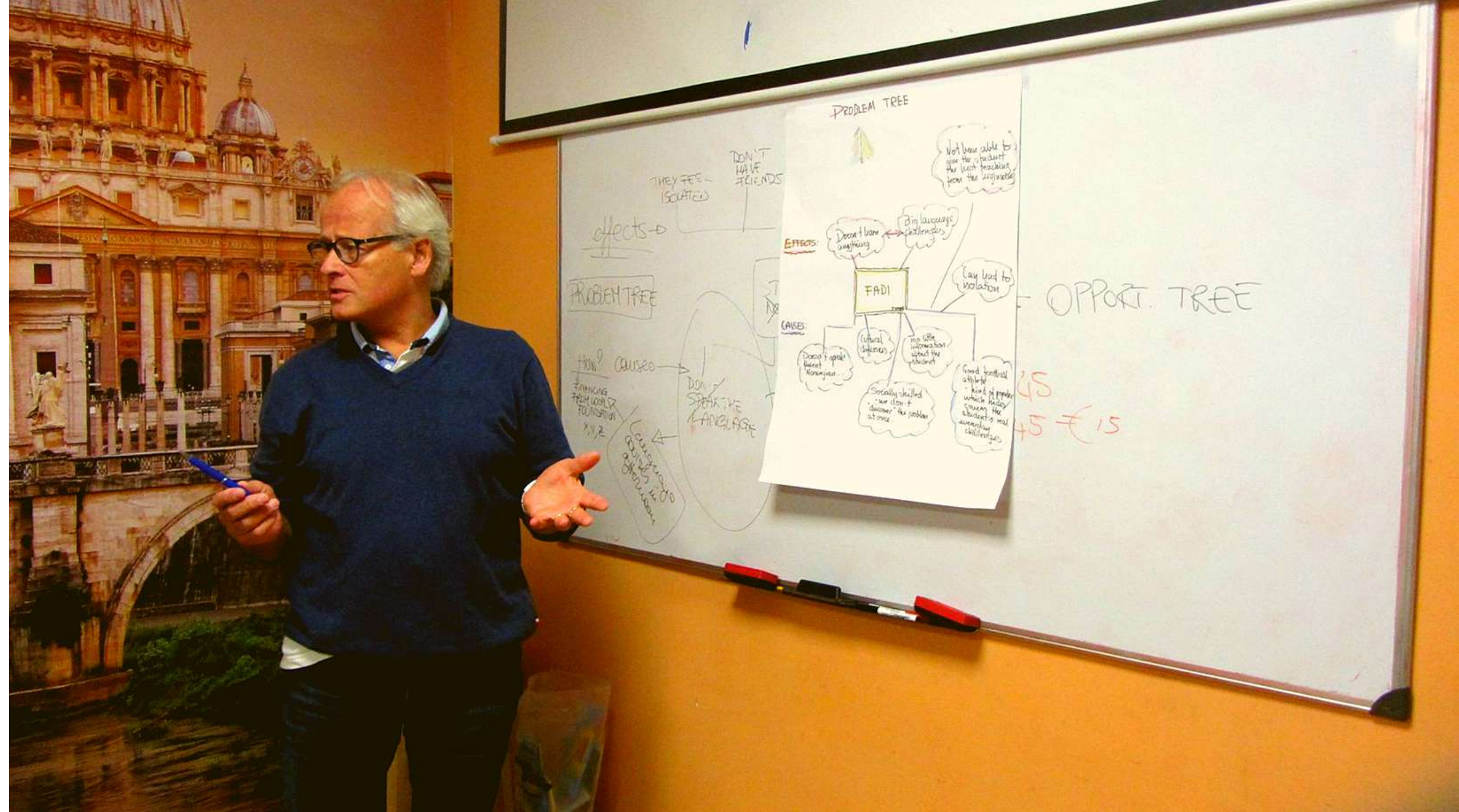
Courses are held by a **professional trainer** in the field and in specific dates as indicated in the website. We can also organize it in other dates if the participating group has 10+ components.

We can manage:

- Documents & Europasses;
- Airport transfer & cultural visits;
- Monitoring and evaluation of the project;
- Final certification.

AFTER THE MOBILITY

Upon request, we can publish articles on our blog or newspaper entries to be added to your final report. We can also give pictures and other material to be used as additional dissemination products.



Some Inspiring Words

THE PROGRAMME WAS VERY WELL ORGANISED AND LED. THE AMFI STAFF IS VERY KIND AND ADAPTABLE, AND ABOVE ALL VERY PROFESSIONAL. DESPITE THE FACT THAT I'M TEACHING ENTREPRENEURSHIP FOR ALMOST 20 YEARS, I GOT NEW, FRESH VIEW ON MANY STUFF, VERY GOOD SUGGESTIONS AND IDEAS OF HOW TO APPROACH TO MY STUDENTS FROM SOME OTHER SIDE. I ALSO LIKED THE START UPS, ESPECIALLY COVALPA AND THE ANDREA ADRSTUDIO DI ROCCO. IF I EVER GET A CHANCE, I WILL COME AGAIN. THANK YOU AMFI, YOU ARE THE BEST! <3

Dijana Stolfa , Croatia - Teacher



newmapoftheworld Beautiful ladies, you know?



YOUTH & EVS

Our other soul

We are also a youth organization expert in **YOUTH EXCHANGES** as sending and hosting institution.

We have also received an accreditation as **EVS Coordinating, Sending and Hosting institution**. Therefore, we are opened to any kind of collaboration for any project you might want to propose.

If you want to send us info about the project your are writing or you need us to sign your mandate please email everything to our dedicated channel youth@amfinternational.org.



OUR ACCOMMODATIONS

The socialization spots

FOR STUDENTS

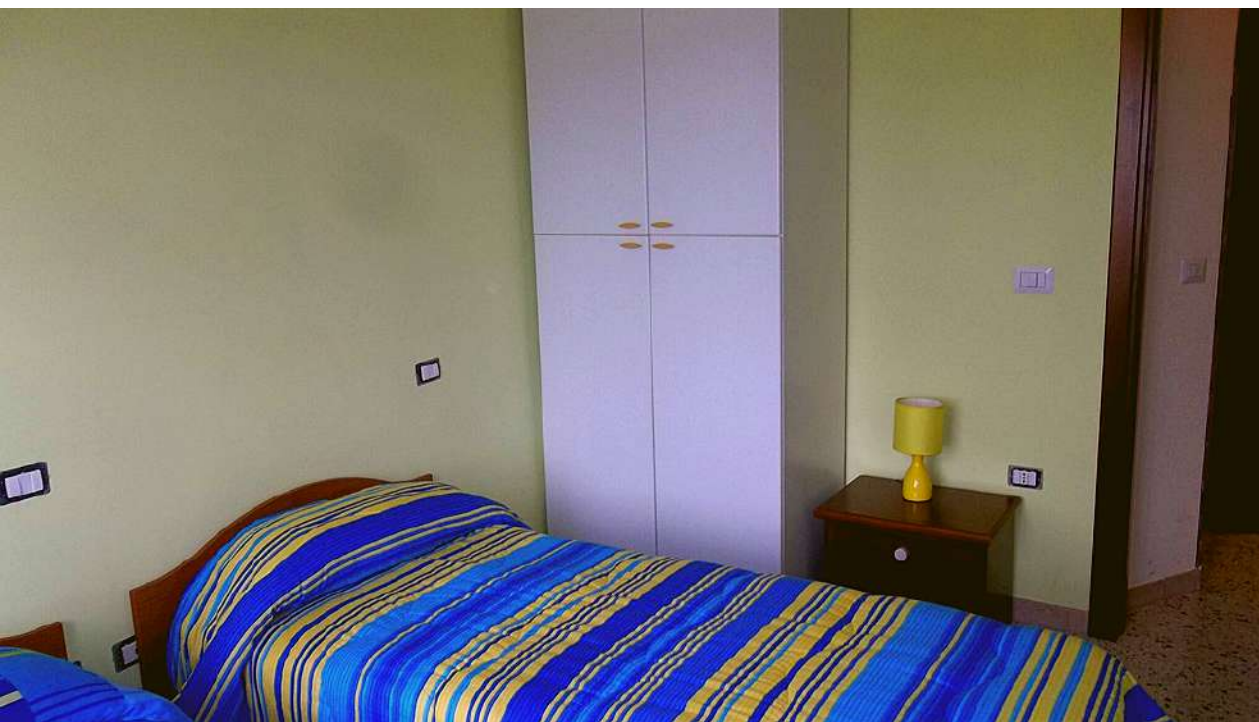
We offer 2 accommodation solutions based on the project length:

- accommodation in fully furnished apartments with BILLS and WI-FI **included**;
- accommodation in a **** hotel with WI-FI in double, triple or quadruple rooms with possibility of breakfast, lunch and dinner included in the package.

FOR TEACHERS/STAFF

We offer 3 accommodation solutions based on the length of the project:

- accommodation in fully furnished studio apartments with BILLS and WI-FI **included**;
- accommodation in a **** hotel with WI-FI in single, double, triple or quadruple rooms with possibility of breakfast, lunch and dinner included in the package;
- accommodation in B&B.





TRANSPORTATION

Moving around

FROM AIRPORTS

We are perfectly connected though **PRONTOBUS** (<http://www.prontobusitalia.it>) with both Roman airports: Ciampino & Fiumicino. Our stop is AVEZZANO TERMINAL BUS. There, we will be waiting for you to escort you to your accommodation.

LOCAL TRANSPORTATION

There are two ways to move around in Celano and Avezzano:

- Bus: <https://tua.mycicero.it/TPWebPortal/>
- Train: <http://www.trenitalia.com/>

The two cities are well connected with buses running every 20 minutes.

EXTRAORDINARY TRANSPORTATION

If you wish to go somewhere at your own time, we are able to organize your transportation either with our van & minibus or with a private transportation company. The service is upon reservation.



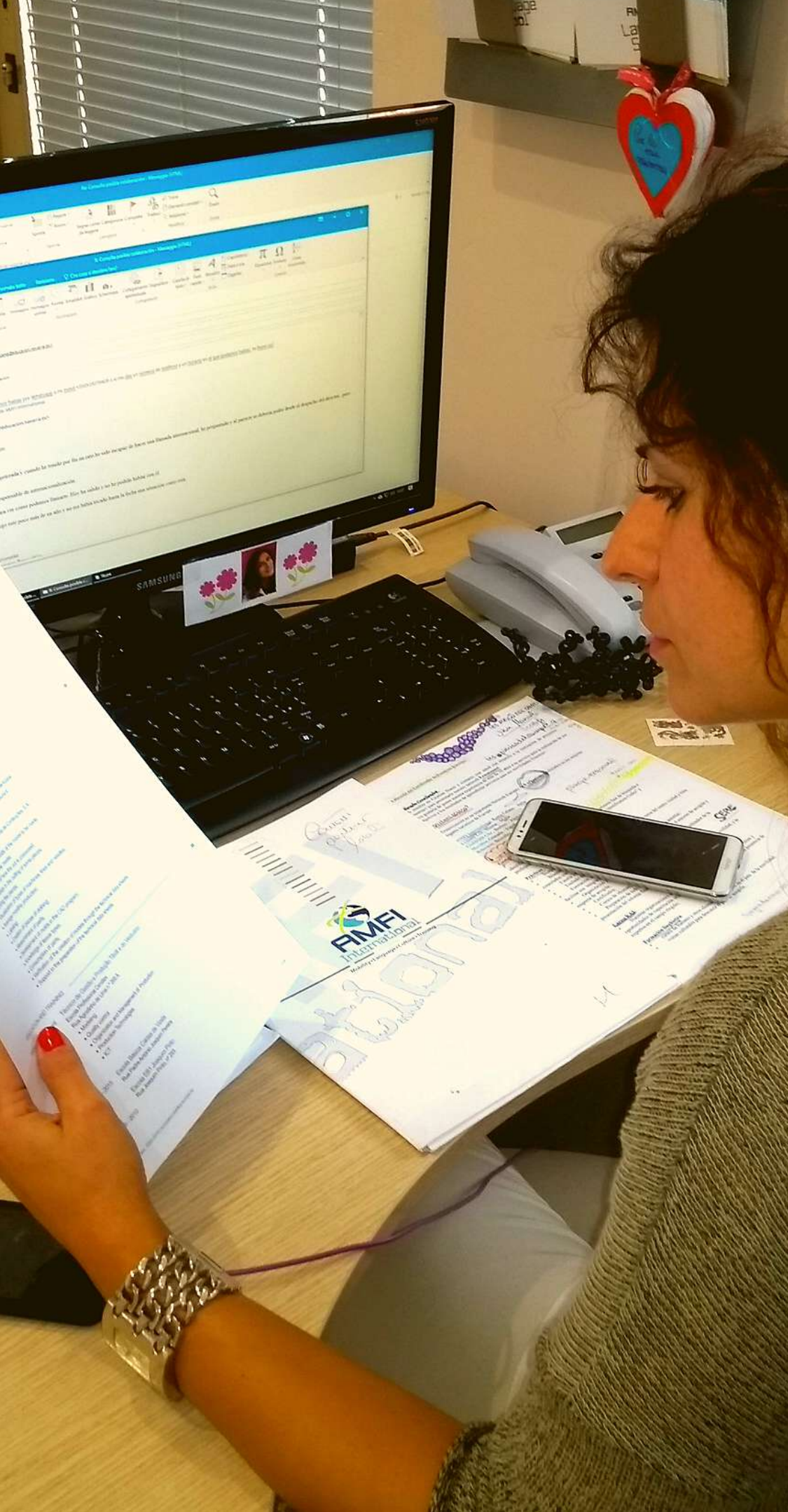
PREPARATORY VISITS

Your way to check us out

A preparatory visit can have multiple positive outcomes:

- you can **meet** our staff;
- see our **location**;
- see our **accommodation** solutions live;
- define **programmes**;
- **sign** MoUs and other documents in original;
- have a NICE COMPLIMENTARY **LUNCH** WITH US to discuss about our partnership.

WE ARE WAITING FOR YOU! Book your preparatory visit sending an email to project@amfinternational.org.



ECVET PROTOCOL

Our quality guidelines

OUR OBJECTIVES WITH ECVET

- strengthen synergies and transitions between areas of formal and non-formal VET learning, employment and entrepreneurship;
- ensure better recognition of the acquired skills.

THE PROCEDURE

- Sign a Memorandum of Understanding MoU with the sending partner;
- Identify and reflect upon the learning outcomes / units of experience together with the sending institution;
- Agree on how to evaluate the unit among the partners;
- Identify the methods of validation and recognition;
- Stipulate and complete the learning agreement, which will be the guiding book of the project.



OUR EU FRIENDS

for education & mobility

NATIONAL PARTNERSHIPS

OUR ENGINES



Members of RIVE

We are an accredited EVS Hosting and Sending institution



Members of Euroguidance

Linking Lifelong Guidance and International Mobility Across Europe



Members of Erasmusnet

A network of hosting institutions in Europe.

OUR NUMBERS

2510

MANAGED MOBILITIES

587

MANAGED PROJECTS

MEET THE TEAM

OUR PROJECT HEADS



Cristina Nucci

Incoming Coordinator
incoming@amfinternational.org
+39 351 937 0428



Paola Panfili

Project Manager
info@amfinternational.org
+39 351 960 7933



Giovanni Tatarelli

Administration
admin@amfinternational.org

CONTACT INFO



Mailing address

Via Stazione, 50
67043 Celano, L'Aquila
ITALY



Email address

info@amfinternational.org



Phone number

+39 0863 79 02 71

OUR SOCIAL SOUL



FACEBOOK

@Erasmus.Mobility.Italy



YOUTUBE

AMFI International



LINKEDIN

AMFI International



INSTAGRAM

amfi_international



SCHOOL EDU.

GATEWAY

AMFI International
<https://goo.gl/KKyGKY>



EY PORTAL

AMFI International

Up2Europe

UP2EUROPE

AMFI International
Consultant Profile